

MATERIAL: SEE B/M
 DRAWN: TFK
 SCALE: NONE
 CHECKED: DEP
 DATE: 9/15/95



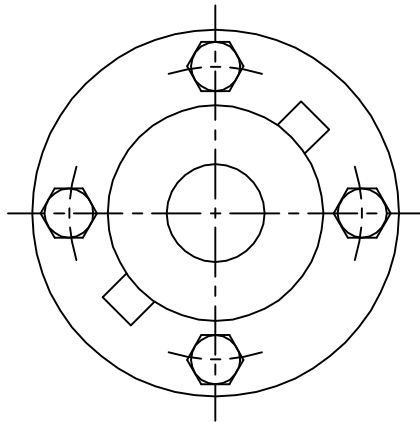
SIGHT FLOW INDICATOR
 1000-S

Section: T400
 Bulletin: T400.40
 Date: 12/01/00
 Supersedes: 11/10/98

VARIOUS PRESSURES

FILE NO.: T400-40.DWG

THIS DRAWING AND ALL INFORMATION ON IT IS THE PROPERTY OF JACOBY-TARBOX, DIVISION OF THE CLARK-RELIANCE CORPORATION. IT IS CONFIDENTIAL AND IS GIVEN TO YOU FOR A LIMITED PURPOSE AND MUST BE RETURNED UPON REQUEST. NEITHER THIS DRAWING NOR ANY PART OF IT NOR ANY INFORMATION CONCERNING IT MAY BE COPIED, EXHIBITED OR FURNISHED TO OTHERS NOR MAY PHOTOGRAPHS BE TAKEN OF ANY ARTICLE FABRICATED OR ASSEMBLED FROM THIS DRAWING WITHOUT CONSENT OF THE CLARK-RELIANCE CORPORATION.



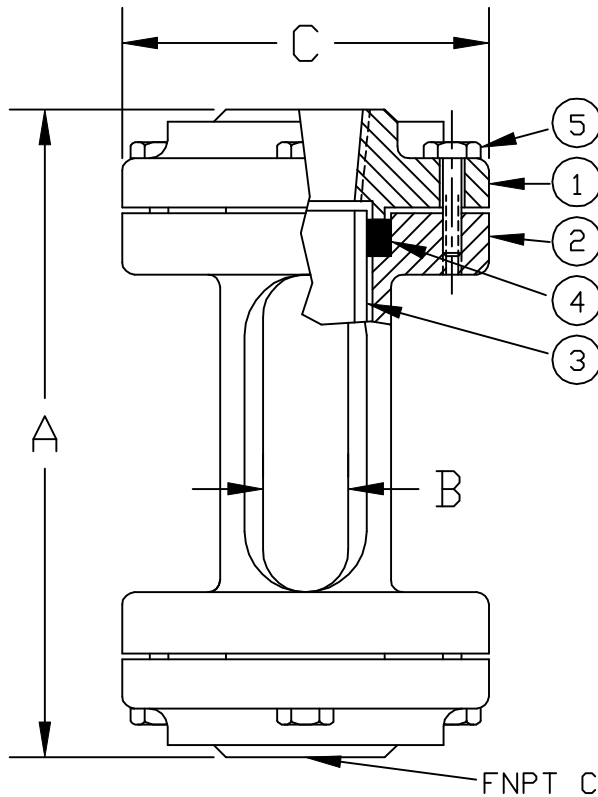
PARTS LIST

PIECE NO.	NAME OF PART	QUAN.	MATERIAL	COMMENTS
1	HEAD	2	SEE BELOW	
2	BODY	1	CAST IRON	
3	CYLINDER	1	ANN. BOROSILICATE	
4	GASKET **	2		
5	BOLTS	8	STEEL	

**NOTE: AVAILABLE W/ NEOPRENE STANDARD, VITON, SILICONE, AND TEFLON ENVELOPE WITH ONE OF THE ABOVE AS AN INSERT

STANDARD DESIGN MATERIALS:

- HEAD: ASTM A-216 WCB (CARBON STEEL)
- ASTM A-351 CF8M (316 SS)
- ASTM B-62 (BRONZE)
- ASTM A-126 CLASS B (CAST IRON)



PRESSURE/TEMP. RATINGS		
TEMP F	ALL MATERIALS *	
	1/4 TO 1-1/2	2
-20 TO 100	150	100
150	150	100
200	150	100
250	150	100
300	150	100
350	150	100
400	150	100
450	150	100

- BODY: ASTM A-278 CLASS 30 (IRON)
- *BODY IS NOT A WETTED COMPONENT
- FASTENERS: SAE GRADE 5 (ZINC PLATED STEEL)
- INDICATOR: N/A
- OPTIONAL ALLOYS FURNISHED UPON REQUEST

* BRONZE AND CAST IRON ARE NOT RECOMMENDED FOR SERVICE ABOVE 400 F

- OPTIONAL FEATURES:
- 304/316 SS TRIM AVAILABLE

STYLE 1000-S

FNPT CONNECTIONS

PIPE SIZE	DIMENSIONS									
	A		B		C		APPROX. WGT.		PRESSURE RATING	
	IN.	mm	IN.	mm	IN.	mm	LBS.	KGS.	PSIG	BAR
1/4	7.0	178	.88	22	2.75	70	4	1.8	150	10.3
1/2	7.0	178	.88	22	2.75	70	4	1.8	150	10.3
3/4	7.0	178	1.12	28	3.12	79	5	2.3	150	10.3
1	7.0	178	1.12	28	3.12	79	5	2.3	150	10.3
1-1/4	7.63	194	1.50	38	4.12	105	9	4.1	150	10.3
1-1/2	7.63	194	1.50	38	4.12	105	9	4.1	150	10.3
2	7.63	194	3.0	76	5.25	133	14	6.4	100	7.1