

FAMILY OWNED AND OPERATED SINCE 1933



Hannay Reels®
The reel leader.

LP Gas Hose Reels



The
Hannay
Way

Home Delivery Trucks • Dispensing Systems
Fueling Vehicles • Filling Stationary and Portable Cylinders

www.hannay.com

Pride in workmanship • Reels built to order • Consistent quality • Service with integrity • Value for your dollar

Note to Designers and Engineers:

The reels shown in this catalog are the standard of the industry.

These models reflect various installation and performance requirements.

The high quality of our standard steel construction is only the beginning.

Hannay Reels offers any size configuration to fit a defined space, and we construct many models of reels with aluminum or stainless steel. Specifically, we use 5000 and 6000 Series aluminum and 304 stainless steel in the

manufacture of frames, discs, drums and internals as well as other structural components. This type of construction eliminates the need for maintenance repainting and part replacement due to rust or corrosion.

Please consult factory on any fuel handling questions.

For a listing of accessories and components available on our standard reel models such as roller guides, switches, brakes and locks, etc., please refer to our Ordering & Accessory Guide H-0415-OA.

S E R I E S

PB/DPB

MANUAL OR POWER REWIND REELS

To handle single 1" through 1-1/2" I.D. hose.

- Series PB are explosion-proof reels.
- New DPB Series reel is direct drive eliminating the use of chain and sprockets.
- Choose gear-driven crank rewind, chain and sprocket drive powered by an electric, hydraulic or compressed air motor or direct drive hydraulic rewind motor.
- Crank rewind reels and direct drive reels supplied with pinion brake.
- Power rewind reels (chain & sprocket driven) supplied with a strap brake. Other brake and locking devices may be specified.
- Standard inlet is 90° ball bearing swivel joint with 1-1/2" female NPT threads.
- Standard outlet is a flanged riser with 1" female NPT threads. Standard inlet, outlet riser, and hub assembly are steel.
- Other sizes and/or threads can be furnished and must be specified.
- Rollers and roller mounting brackets are accessory items. Specify roller position.
- Pressures to 350 psi (24 bar).
- Temperatures from -40° F to +350° F (-40° C to +177° C).
- Consult factory for other pressures and temperatures.



Series PB
Electric Rewind Shown



Series DPB
Direct Drive Hydraulic Rewind

S E R I E S**PB/DPB****Parts Drawing – ISO 18**

Model Number	Hose Capacity of Reel feet m.			Approx. Weight Crank Rewind lb. kg. See Note 4		Reel Dimensions*** inches mm.									
	I.D. (in) I.D. (mm)	1" 25	1-1/2" 38	NET*	SHIP	A	B	D	E	F POWER	F DIRECT DRIVE HYD	G	H	X	Y
	O.D. (in) O.D. (mm)	1.5" 38	2.16" 55												
PB24-23-24		125 38	50 15	102 46	144 65	21 533	15.5 394	20.5 521	22.75 578	29.25 743	35.12 892	23.5 597	12.12 308	13 330	16.75 425
PB30-23-24		150 46	75 23	115 52	157 71	27.5 699	22 559	20.5 521	22.75 578	35.75 908	41.62 1057	23.5 597	12.12 308	19.5 495	16.75 425
PB24-25-26		150 46	75 23	110 50	152 69	21 533	15.5 394	25.5 648	24.75 629	29.25 743	35.12 892	27.88 708	15.5 394	13 330	21.75 552
PB28-25-26		200 61	100 30	123 56	165 75	25.5 648	20 508	25.5 648	24.75 629	33.75 857	39.62 1006	27.88 708	15.5 394	17.5 445	21.75 552
PB22-30-31		250 76	100 30	118 54	168 76	19 483	13.5 343	25.5 648	28.75 730	27.25 692	33.12 841	29.88 759	15.5 394	11 279	21.75 552
PB18-33-34		200 61	75 23	117 53	167 76	14.5 368	9.5 241	31.5 800	31.75 806	23.75 603	29.12 740	33.62 854	17.75 451	7 178	27.75 705

Notes:

- Specifications subject to change.
- Upon request, reels can be supplied with drum lengths other than shown and with disc sizes in other diameters.
- Dimensions shown for reels up to and including 30-31 disc size reflect pressed frames. All others are channel frames.
- Weights shown in chart are for crank rewind models. ADD these amounts for power rewind models:

	Net (lbs.)	Ship (lbs.)	Net (kg.)	Ship (kg.)
Electric	40	40	18.1	18.1
Hydraulic	20	20	9.1	9.1
Air	20	20	9.1	9.1

- When ordering power rewind models, prefix model number with:

A = Air Rewind – Supplied with control valve and hose.

E = Explosion Proof Electric Rewind (1/2 HP) – Supplied with explosion proof switch, solenoid, and junction box.

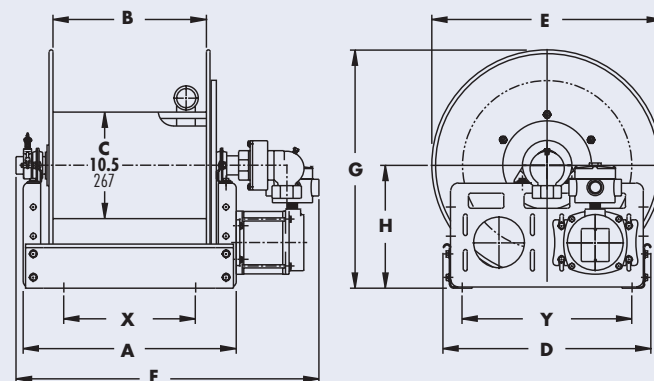
HD = Hydraulic Rewind – Not supplied with control valve.

D = Direct Drive Hydraulic Rewind – Not supplied with control valve

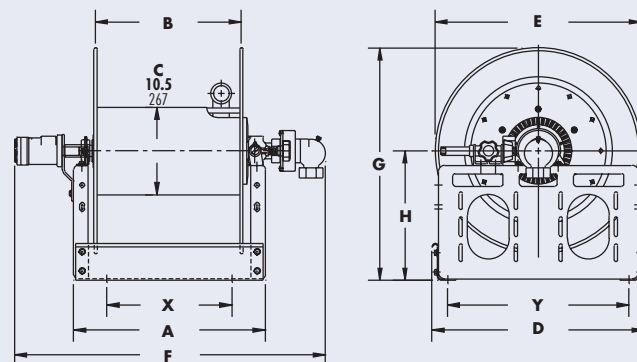
6. Be sure to check dimensions and weights prior to ordering.

NOTICE: A Flexible Connector must be used between the inlet pipe and the inlet swivel joint.

***x,y indicate mounting holes.



Series EPB



Series DPB

S E R I E S

PBGMT/PBGMB

POWER REWIND REELS

To handle single 1" or 1-1/2" I.D. hose.

Both Series

- Choose chain and sprocket drive powered by an electric, hydraulic or compressed air motor or direct drive hydraulic rewind motor.
- Auxiliary crank rewind standard on DPB Series reels. Available on PB Series power rewind reels, at extra cost.
- Direct drive hydraulic rewind reels supplied with pinion brake. Electric powered rewind reels supplied with a strap brake.
- Other brake and locking devices may be specified. (See Ordering & Accessory Guide)
- Standard inlet is 90° ball bearing swivel joint with 1-1/2" female NPT threads.
- Standard outlet is a flanged riser with 1" female NPT threads.
- Standard inlet, outlet riser, hub assembly are steel.
- Other sizes and/or threads can be furnished and must be specified.
- Pressures to 350 psi (24 bar).
- Temperatures from -40° F to +350° F (-40° C to +177° C).
- Consult factory for other pressures and temps.

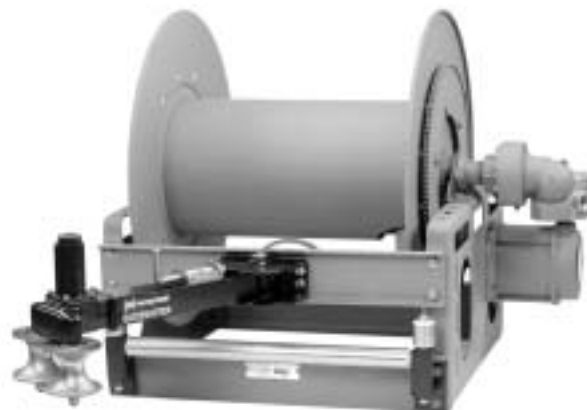
Series PBGMB

- For PBGMB reels the assembly B bottom wind roller is standard.



Series PBGMT with Top-Mounted Guidemaster

Standard Configuration Shown /
Electric Rewind Shown



Series PBGMB with Bottom-Mounted Guidemaster

Electric Rewind Shown

S E R I E S

PBGMT/PBGMB

Parts Drawing: Both Series PBGMT and Series PBGMB – ISO 18 and ISO 195

Model Number	Cable Capacity of Reel feet m.			Approx. Weight Crank Rewind lb. kg.		Reel Dimensions*** inches mm.													
	O.D. (in)	1"	1-1/2"	NET	SHIP	A	B	D	E	F PWR	F DIRECT DRIVE HYD	G	H	J	K	L	M	X	Y
	O.D. (in) O.D. (mm)	1.5" 38	2.16" 55																
PBGMT 24-23-24		125 38	50 15	168 76	193 88	21 533	15.5 394	20.5 521	22.75 578	29.25 743	35.12 892	29.5 749	12.12 308	33 838	36.75 933	30 762	31.5 800	13 330	16.75 425
PBGMT 30-23-24		150 46	75 23	178 81	208 94	27.5 699	22 559	20.5 521	22.75 578	35.75 908	41.62 1057	29.5 749	12.12 308	33 838	40.62 1032	36.75 933	31.5 800	19.5 495	16.75 425
PBGMT 28-25-26		200 61	110 34	181 82	211 96	25.5 648	20 508	25.5 648	24.75 629	33.75 857	39.62 1006	33 838	15.5 394	34 864	39 991	34.75 883	35 889	17.5 445	21.75 552
PBGMB 24-23-24		125 38	50 15	160 73	185 84	21 533	15.5 394	20.5 521	22.75 578	29.25 743	35.12 892	23.5 597	12.12 308	49 1245	36.75 933	30 762	—	13 330	16.75 425
PBGMB 30-23-24		150 46	75 23	170 77	200 91	27.5 699	22 559	20.5 521	22.75 578	35.75 908	41.62 1057	23.5 597	12.12 308	49 1245	36.75 933	36.75 933	—	19.5 495	16.75 425
PBGMB 28-25-26		200 61	100 30	191 87	221 100	25.5 648	20 508	25.5 648	24.75 629	33.75 857	39.62 1006	27.88 708	15.5 394	47.75 1213	39 991	34.75 883	—	17.5 445	21.75 552
PBGMB 18-33-34		200 61	75 23	175 79	225 102	14.5 368	9.5 241	31.5 800	31.75 806	23.75 603	29.12 740	33.62 854	17.75 451	56.75 1441	33.5 851	26.75 679	—	7 178	27.75 705

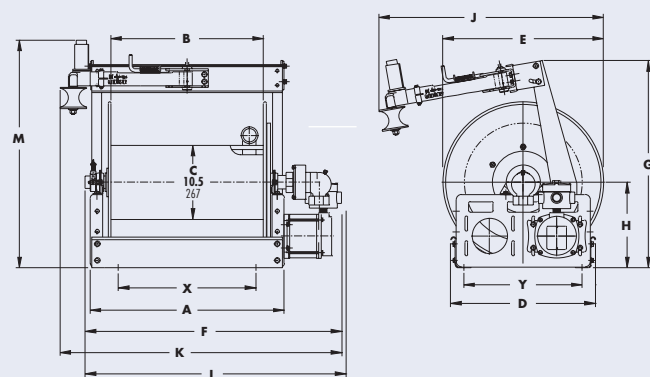
Notes:

- Specifications subject to change.
- Upon request, reels can be supplied with drum lengths other than shown and with disc sizes in other diameters.
- When ordering power rewind models, prefix model number with:
A = Air Rewind—Supplied with control valve and hose.
E = Explosion Proof Electric Rewind (1/2 HP)—Supplied with explosion proof switch, solenoid, and junction box.
HD = Hydraulic Rewind—Not supplied with control valve.
D = Direct Drive Hydraulic Rewind—Not supplied with control valve.
- Dimension J is maximum, with Guidemaster in operating position. Dimension K is maximum, with Guidemaster in traveling position opposite rewind motor, as shown in dimensional drawing. Dimension L is maximum, with Guidemaster in traveling position on same side as rewind motor.
- Guidemaster weight is approximately 21 lbs. Guidemasters are shipped as parts.

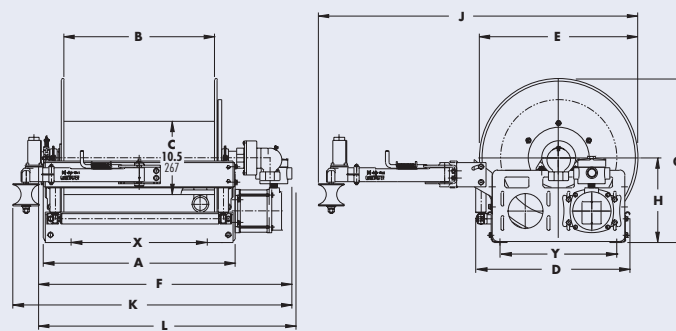
6. Be sure to check dimensions and weights prior to ordering.

NOTICE: A Flexible Connector must be used between the inlet pipe and the inlet swivel joint.

***x,y indicate mounting holes.



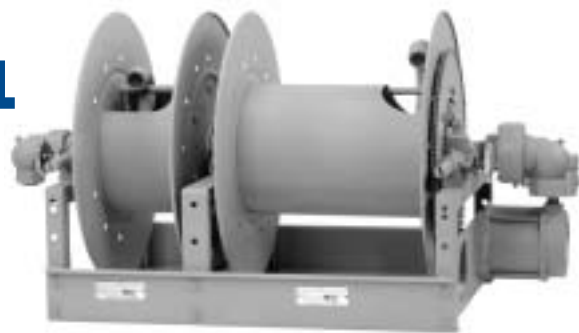
Series PBGMT



Series PBGMB

S E R I E S**PBM****POWER REWIND LIQUID REEL
WITH MANUAL REWIND VAPOR REEL****To handle 1" through 1-1/2" I.D. liquid hose &
1/2" through 1" vapor hose.**

- Gear-driven crank on vapor reel.
- Chain and sprocket drive powered by an electric, hydraulic or compressed air motor liquid reel.
- Pinion shaft brake standard.
- Other locking devices may be specified.
- Standard inlet is 90° ball bearing swivel joint with 1-1/2" female NPT threads.
- Manual rewind reel: 1" female NPT 90° ball bearing swivel joint.
- Liquid reel: flanged riser, 1" female NPT threads.
- Vapor reel: riser, 1" female NPT threads.
- Standard inlet, outlet riser, and hub assembly are steel.
- Other sizes and/or threads can be furnished and must be specified.
- Rollers and roller mounting brackets are accessory items. Specify roller position.
- Pressures to 350 psi (24 bar).
- Temperatures from -40° F to +350° F (-40° C to +177° C).
- Consult factory for other pressures and temps.

**Series PBM****Standard Configuration Shown
Electric Rewind Shown****Parts Drawing – ISO 123**

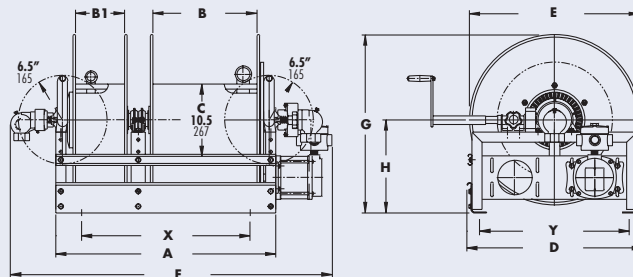
Model Number	Hose Capacity of Reel <div>feet</div> <div>m.</div>						Approx.Weight <div>lb.</div> <div>kg.</div>		Reel Dimensions*** <div>inches</div> <div>mm.</div>									
	Liquid Reel			Vapor Reel			NET	SHIP	A	B	B1	D	E	F PWR	G	H	X	Y
	I.D. (in)	1"	1-1/2"	1/2"	3/4"	1"												
	I.D. (mm)	25	38	13	19	25												
For Power Rewind See Note 3	O.D. (in)	1.5"	2.16"	.94"	1.26"	1.5"												
	O.D. (mm)	38	55	24	32	38												
PBM 24-16-23-24		25	50	175	80	75	256	286	32	15.5	7.5	23.75	23	46.25	23.88	12.5	24.5	20
		38	15	53	24	23	116	130	813	394	191	603	584	1175	607	318	622	508
PBM 30-16-23-24		150	75	175	80	75	264	294	38.5	22	7.5	23.75	23	52.75	23.88	12.5	31	20
		46	23	53	24	23	120	133	978	559	191	603	584	1340	607	318	787	508
PBM 28-16-25-26		200	100	225	100	75	267	297	36.5	20	7.5	25.5	24.75	50.75	25.88	13.5	29	21.75
		61	30	69	30	23	121	135	927	508	191	648	629	1289	657	343	737	552

Notes:

1. Specifications subject to change.
2. Upon request, reels can be supplied with drum lengths other than shown and with disc sizes in other diameters.
3. When ordering power rewind models, prefix model number with:
A = Air Rewind – Supplied with control valve and hose.
E = Explosion Proof Electric Rewind (1/2 HP) – Supplied with explosion proof switch, solenoid, and junction box.
HD = Hydraulic Rewind – Not supplied with control valve.

4. Be sure to check dimensions and weights prior to ordering.**NOTICE:** A Flexible Connector must be used between the inlet pipe and the inlet swivel joint.

***x,y indicate mounting holes.



PBN800/PB800

SPRING REWIND REELS

To handle 1/2" to 1" I.D. hose.



Series PBN800
Standard Configuration
Shown

Series PB800
Standard Configuration
Shown

- Standard N series narrow frame
- Channel frame for heavy-duty applications must be specified.
- Non sparking ratchet locks reel
- Declutching arbor to prevent damage from reverse winding.
- Standard inlet is 90° ball bearing swivel joint with 1" female NPT threads.
- Standard outlet is 1" female NPT threads.
- Other sizes and/or threads can be furnished and must be specified.
- Pressures to 350 psi (24 bar).
- Temperatures from -40° F to +350° F (-40° C to +177° C).
- Consult factory for other pressures and temps.
- Supplied 4-way roller assembly. Specify roller position.

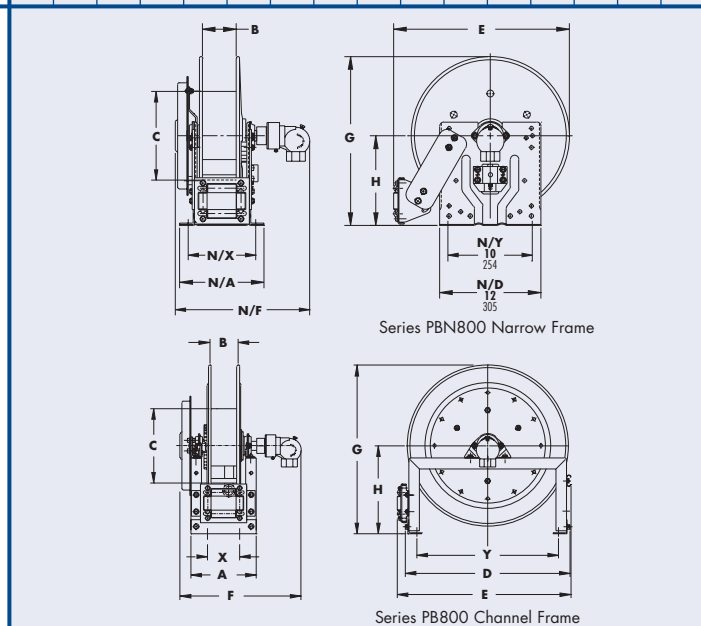
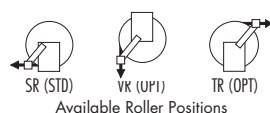
Parts Drawing: Series PBN800 – ISO 81, Series PB800 – ISO 42

Model Number	Hose Capacity of Reel				Approx. Weight		Roller Assy Supplied on Std. Models	Reel Dimensions***																	
	<div>feet</div> <div>m.</div>				<div>lb.</div> <div>kg.</div>			<div>inches</div> <div>mm.</div>																	
	I.D. (in) I.D. (mm)	1/2" 13	3/4" 19	1" 25	NET*	SHIP			A	N/A	B	C	D	E	N/E	F	N/F	G	N/G	H	N/H	N/X	X	Y	
O.D. (in) O.D. (mm)	94" 24	1.25" 33	1.5" 40																						
Delete prefix N for Channel Frame																									
PBN816-25-26B		65 20	60 18	35 11	96 44	131 59	N204	9.25 235	10 254	4 102	10.5 267	25 635	26.12 663	25.25 641	17.63 448	15.75 400	25.88 657	26 660	13.5 343	13.62 346	8 203	4.5 114	22 559		
PBN818-25-26B		60 18	70 21	50 15	102 46	137 62	N206	11.25 286	12 305	6 152	10.5 267	25 635	26.12 663	25.25 641	19.63 499	17.75 451	25.88 657	26 660	13.5 343	13.62 346	10 254	6.5 165	22 559		
PB816-30-31-15.5G		110 34	75 23	40 12	124 56	159 72	R204	9.25 235	— —	4 102	15.5 394	28.5 724	30.5 775	— —	17.63 448	— —	31.88 810	— —	17 432	— —	— —	4.5 114	25.5 648		
PB820-25-26A		75 23	85 26	75 23	131 59	166 75	R308	13.25 337	— —	8 203	10.5 267	25 635	27 686	— —	22.38 568	— —	25.88 657	— —	13.5 343	— —	— —	8.5 216	22 559		
PB820-30-31A		75 23	100 30	100 30	137 62	172 78	R308	13.25 337	— —	8 203	15.5 394	28.5 724	30.5 775	— —	22.38 568	— —	31.38 797	— —	17 432	— —	— —	8.5 216	25.5 648		

Notes:

1. Specifications subject to change.
 2. Others sizes, from standard components, available on request.
 3. For optional locations of joint and spring motor placement – consult factory.
 4. Be sure to check dimensions and weights prior to ordering.
- NOTICE:** A Flexible Connector must be used between the inlet pipe and the inlet swivel joint.

***x,y indicate mounting holes.



Trust the Reel Leader for LP Gas Reels.

Hannay Reels Are Custom-Built for Better Performance.

Don't trust a "one-size-fits-all" or "adjustable" LP gas reel. Only Hannay LPG reels are built to fit your specific application, guaranteeing a perfect fit.

With more than 70 years of experience, Hannay Reels is the reel leader. Our LPG reels are the only ones to provide years of trouble-free operation in home delivery trucks, dispensing systems and fueling vehicles, and for filling stationary and portable cylinders.

Hannay LPG reels – available in aluminum, stainless steel, and e-coated and painted steel – give you superior protection against contamination and corrosion in sensitive or harsh environments. With minimal potential for rust, these durable reels are the wisest choice for any LP gas application.

Because Hannay reels are custom manufactured for your needs, unconventional installations – such as inverted mounting – are easy to accommodate. Adjustable reels just can't offer that sort of versatility.

Don't take chances or settle for second-best. Trust Hannay Reels with your LPG delivery.



*Petroleum Reels catalog
and Static Grounding
Reels information sheet
also available.*



Family owned and operated since 1933, Hannay Reels is a leader in both OEM and aftermarket applications. Hannay offers thousands of standard hose reel and cable reel models, as well as unmatched custom capabilities. We can easily and affordably customize a reel to meet your exact specifications – built to last, delivered fast. Additional catalogs are available through your local Hannay Reels dealer or online at www.hannay.com.



553 State Route 143 • Westerlo, New York 12193-0159
Toll Free Phone: 1-877-GO-REELS • Toll Free Fax: 1-800-REELING

E-mail: reels@hannay.com

Intl. Phone: 1-518-797-3791 • Intl. Fax: 1-518-797-3259

www.hannay.com



MADE IN U.S.A.