

MATERIAL: SEE B/M  
 DRAWN: TFK CHECKED: DEP  
 SCALE: NONE DATE: 09/15/95



SIGHT FLOW INDICATOR  
 STYLE 100-SFA, 200-SFA, 300-SFA

Section: T400  
 Bulletin: T400.16  
 Date: 12/01/00  
 Supersedes: 11/10/98

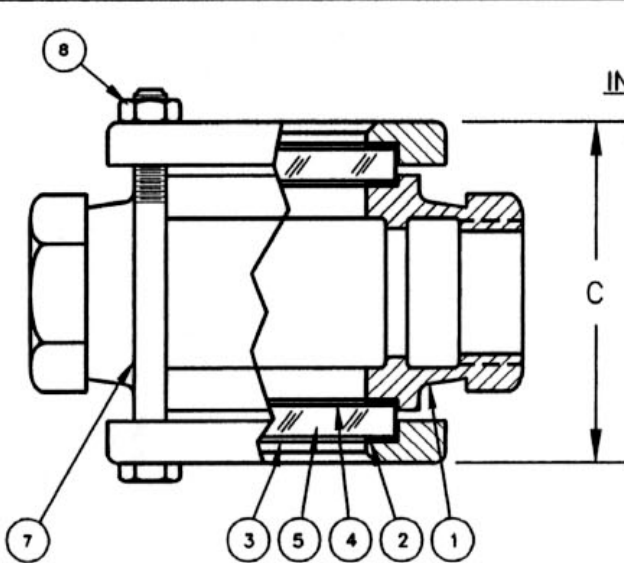
150 ASME CLASS MODELS

FILE NO.: T400-16.DWG

PARTS LIST

PIECE NO.	NAME OF PART	QUAN.	MATERIAL	COMMENTS
1	BODY	1	SEE BELOW	
2	RETAINER	2	STEEL	
3	CUSHION	2	FIBER	
4	SEAL GASKET	2		
5	WINDOW	2	BOROSILICATE	
6	NUT	4	STEEL	
7	BOLT	4	STEEL	
8	INDICATOR	1		

THIS DRAWING AND ALL INFORMATION ON IT IS THE PROPERTY OF JACOBY-TARBOX, DIVISION OF THE CLARK-RELIANCE CORPORATION. IT IS CONFIDENTIAL AND IS GIVEN TO YOU FOR A LIMITED PURPOSE AND MUST BE RETURNED UPON REQUEST. NEITHER THIS DRAWING NOR ANY PART OF IT NOR ANY INFORMATION CONCERNING IT MAY BE COPIED, EXHIBITED OR FURNISHED TO OTHERS NOR MAY PHOTOGRAPHS BE TAKEN OF ANY ARTICLE FABRICATED OR ASSEMBLED FROM THIS DRAWING WITHOUT CONSENT OF THE CLARK-RELIANCE CORPORATION.



INDICATOR OPTIONS



FLAPPER

STYLE 100-SFA



PTFE FLUTTER

STYLE 100-SFA-FLTR STYLE 200-SFA



DRIP TUBE



PTFE ROTOR

STYLE 300-SFA

STANDARD DESIGN MATERIALS:

- BODY: ASTM A-216 WCB (CARBON STEEL)
- ASTM A-351 CF8M (316 SS)
- ASTM B-62 (BRONZE)
- ASTM A-126 CLASS B (CAST IRON)

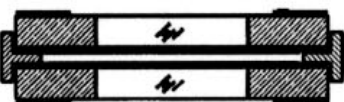
- RETAINER: ASTM A-516 GR. 70 (STEEL)
- ASTM A-216-WCB (STEEL)
- FASTENERS: A354-BD/A194-2H (STEEL)
- INDICATOR: 316 SS FLAP&DRIP, PTFE FLUTTER

304/316 SS TRIM AVAILABLE  
 OPTIONAL ALLOYS FURNISHED UPON REQUEST

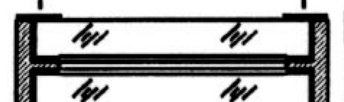
ASME CLASS PRESSURE/TEMP RATINGS

TEMP F	150 CLASS			
	STEEL	316 SS	BRONZE	IRON
-20 TO 100	285	275	225	200
150	270	260	225	200
200	260	240	210	190
250	245	230	195	175
300	230	215	180	165
350	215	205	165	150
400	200	195	150	140
450	185	180	N/R	N/R
500	170	170	N/R	N/R

OPTIONS  
 DUAL UNIGLAS WINDOWS

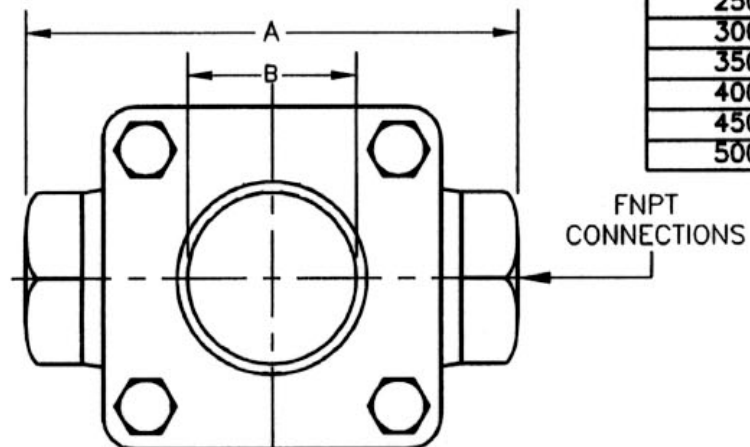
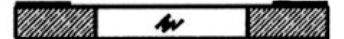


FULL VIEW DUAL WINDOWS



Factory Mutual System Approved

UNIGLAS WINDOW



PLAIN   
 STYLE 100-SFA (NF)

DIMENSIONS

PIPE SIZE	A		B		C		APPROX. WGT.	
	IN.	mm	IN.	mm	IN.	mm	LBS.	KGS.
1/8, 1/4, 3/8	3	76	27/32	21	3	76	3	1.4
1/2 & 3/4	3-3/4	95	1-1/4	32	4-3/4	121	4	1.8
1	4-1/4	108	1-7/32	31	5-1/2	140	6	2.7
1-1/4 & 1-1/2	5-1/2	140	2-7/32	56	7	178	13	5.9
2	6-1/4	159	2-1/2	64	9-7/8	251	17	7.7