

MATERIAL: PER BOM
 DRAWN: TFK CHECKED: DEP
 SCALE: NONE DATE: 9-15-95

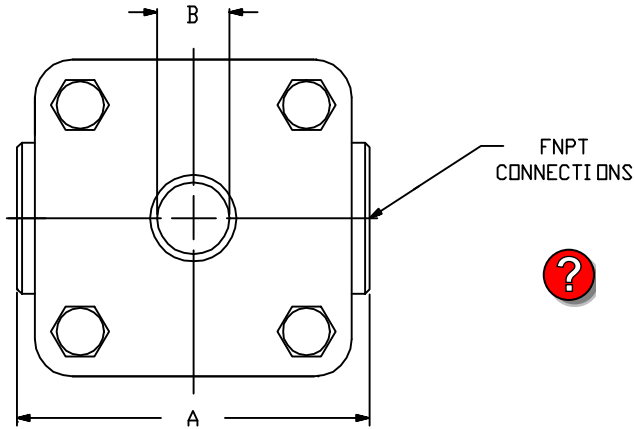


SIGHT FLOW INDICATOR
 S-100HP-3000, S-200HP-3000,
 S-300HP-3000, S-400HP-3000

Section: T400
 Bulletin: T400.20
 Date: 12/01/90
 Supersedes: 11/10/98

3000 PSIG MODELS

FILE NO.: T400-20.DWG

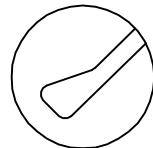


PARTS LIST				
PIECE NO.	NAME OF PART	QUAN.	MATERIAL	COMMENTS
1	BODY	1	SEE BELOW	
2	RETAINER	2	STEEL	
3	CUSHION	2	FIBER	
4	SEAL GASKET	2		
5	WINDOW	2	BOROSILICATE	
6	BOLT	4	STEEL	
7	NUT	4	STEEL	
8	INDICATOR	1		
10	WINDOW HOLDER	2	STEEL	

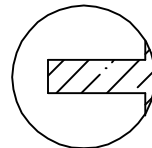
THIS DRAWING AND ALL INFORMATION ON IT IS THE PROPERTY OF JACOBY-TARBOX, DIVISION OF THE CLARK-RELIANCE CORPORATION. IT IS CONFIDENTIAL AND IS GIVEN TO YOU FOR A LIMITED PURPOSE AND MUST BE RETURNED UPON REQUEST. NEITHER THIS DRAWING NOR ANY PART OF IT NOR ANY INFORMATION CONCERNING IT MAY BE COPIED, EXHIBITED OR FURNISHED TO OTHERS NOR MAY PHOTOGRAPHS BE TAKEN OF ANY ARTICLE FABRICATED OR ASSEMBLED FROM THIS DRAWING WITHOUT CONSENT OF THE CLARK-RELIANCE CORPORATION.

INDICATOR OPTIONS ⑧ * S-400HP-600 HAS ONLY ONE WINDOW

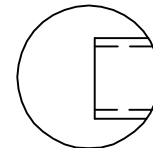
- S-100HP(NF)-3000 PLAIN
- WINDOW OPTIONS
- DUAL UNIGLAS WINDOWS
- FULL VIEW DUAL WINDOWS
- UNIGLAS WINDOW



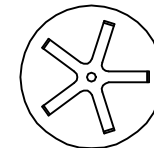
FLAPPER
S-100HP-3000



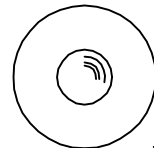
PTFE FLUTTER
S-100HP-FLTR-3000



DRIP TUBE
S-200HP-3000



PTFE ROTOR
S-300HP-3000



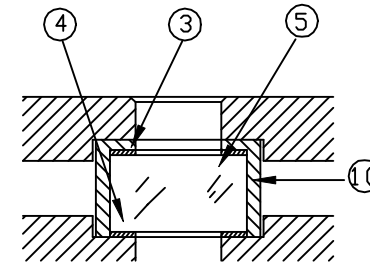
BALL *
S-400HP-3000



STANDARD DESIGN MATERIALS:

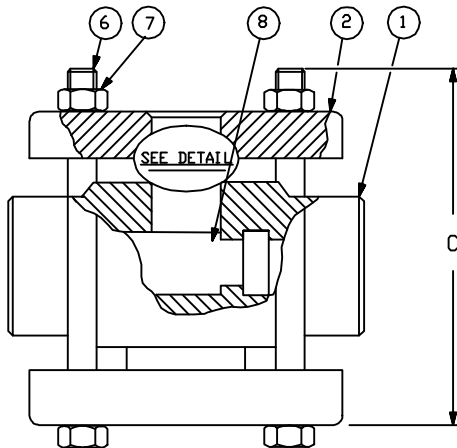
- BODY: ASTM A-216 WCB (CARBON STEEL)
 ASTM A-351 CF8M (316 SS)
 RETAINER: ASTM A-516 GR.70 (STEEL)
 FASTENERS: A193-B7 / A194-2H
 INDICATOR: 316 SS FLAP&DRIP
 : PTFE FLUTTER

304/316 SS TRIM AVAILABLE
 OPTIONAL ALLOYS FURNISHED
 UPON REQUEST



TYPICAL DETAIL
 3000# UNITS

TEMP F	3000	
	STEEL	316 SS
-20 TO 100	3000	3000
150	3000	3000
200	3000	3000
250	3000	3000
300	3000	3000
350	3000	3000
400	3000	3000
450	3000	3000
500	3000	3000



PIPE SIZE	A		B		C		APPROX. WGT.	
	IN.	mm	IN.	mm	IN.	mm	LBS.	KGS.
1/2&3/4	4-1/2	114	1	25	7	178	6	2.7
1	4-7/8	121	1-1/4	32	7	178	8	3.6
1-1/4	6	152	1-1/2	38	10	254	15	6.8
1-1/2	6	152	1-1/2	38	10	254	15	6.8
2	7-1/4	184	2	51	9-1/2	241	35	15.8