

MATERIAL: SEE B/M
 DRAWN: TFK
 SCALE: NONE
 CHECKED: DEP
 DATE: 9-15-95



SIGHT FLOW INDICATOR
 860-F

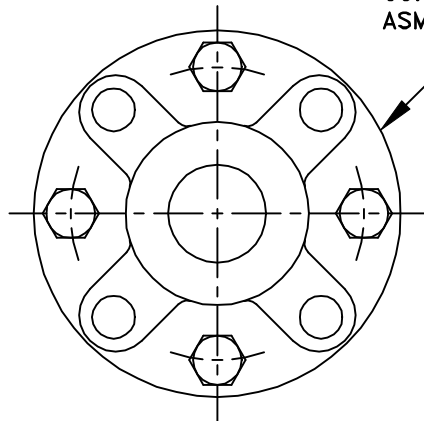
Section: T400
 Bulletin: T400.39
 Date: 12/01/00
 Supersedes: 11/10/98

VARIOUS PRESSURES

FILE NO.: T400-39.DWG

THIS DRAWING AND ALL INFORMATION ON IT IS THE PROPERTY OF JACOBY-TARBOX, DIVISION OF THE CLARK-RELIANCE CORPORATION. IT IS CONFIDENTIAL AND IS GIVEN TO YOU FOR A LIMITED PURPOSE AND MUST BE RETURNED UPON REQUEST. NEITHER THIS DRAWING NOR ANY PART OF IT NOR ANY INFORMATION CONCERNING IT MAY BE COPIED, EXHIBITED OR FURNISHED TO OTHERS NOR MAY PHOTOGRAPHS BE TAKEN OF ANY ARTICLE FABRICATED OR ASSEMBLED FROM THIS DRAWING WITHOUT CONSENT OF THE CLARK-RELIANCE CORPORATION.

CONNECTION PER
 ASME B16.5 CL150 RF



PARTS LIST

PIECE NO.	NAME OF PART	QUAN.	MATERIAL	COMMENTS
1	HEAD	2	SEE BELOW	
2	BODY	1	CAST IRON	
3	CYLINDER	1	ANN. BOROSILICATE	
4	GASKET **	2		
5	BOLTS	8	STEEL	

**NOTE: AVAILABLE W/ NEOPRENE STANDARD, VITON, SILICONE, AND TEFLON ENVELOPE WITH ONE OF THE ABOVE AS AN INSERT

STANDARD DESIGN MATERIALS:

- HEAD: ASTM A-216 WCB (CARBON STEEL)
- ASTM A-351 CF8M (316 SS)
- ASTM B-62 (BRONZE)
- ASTM A-126 CLASS B (CAST IRON)

BODY: ASTM A-278 CLASS 30 (IRON)

*BODY IS NOT A WETTED COMPONENT

FASTENERS: SAE GRADE 5 (ZINC PLATED STEEL)

INDICATOR: N/A

OPTIONAL ALLOYS FURNISHED UPON REQUEST

OPTIONAL LININGS:

PFA TEFLON 30-40 MILS FOR FULL VACUUM SERVICE

OPTIONAL FEATURES:

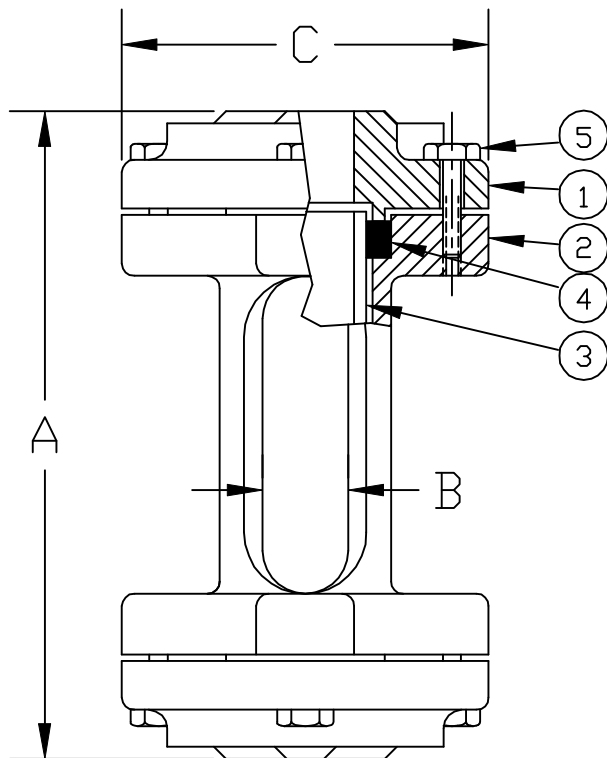
SPECIAL LENGTHS UP TO 48 INCHES AVAILABLE ("A" DIM)

PRESSURE RATINGS DECREASE WITH ADDITIONAL LENGTH

MODEL: 860-FL

SPECIAL ETCHED TUBES (VOLUME/LENGTH) PER APPLICATION

304/316 SS TRIM AVAILABLE



PRESSURE/TEMP. RATINGS			
TEMP F	ALL MATERIALS *		
	1/2 TO 1-1/2	2	2-1/2 TO 3
-20 TO 100	150	120	100
150	150	120	100
200	150	120	100
250	150	120	100
300	150	120	100
350	150	120	100
400	150	120	100
450	150	120	100

* BRONZE AND CAST IRON ARE NOT RECOMMENDED FOR SERVICE ABOVE 400 F

DIMENSIONS

PIPE SIZE	A		B		C		APPROX. WGT.		PRESSURE RATING	
	IN.	mm	IN.	mm	IN.	mm	LBS.	KGS.	PSIG	BAR
1/2	6-1/8	156	13/16	21	3-1/2	89	5	2.3	150	10.3
3/4	6-3/8	162	1-1/16	27	3-7/8	98	8	3.6	150	10.3
1	6-3/8	162	1-1/16	27	4-1/4	108	11	5	150	10.3
1-1/2	6-1/2	165	1-5/8	41	5	127	16	7.3	150	10.3
2	7-5/8	194	2	51	6	152	23	10.4	120	8.3
2-1/2	7-7/8	200	2-3/8	61	7	178	31	14	100	6.9
3	8-1/8	206	2-3/4	70	7-1/2	191	33	15	100	6.9

STYLE 860-F