

MATERIAL: SEE B/M
 DRAWN: TFK
 SCALE: NONE
 CHECKED: DEP
 DATE: 9-02-97



5005-DW, 5005-DW-300
 5005-DW-600
 SAFETY SIGHT GLASS

Section: T400
 Bulletin: T400.50
 Date: 12/01/00
 Supersedes: 11/10/98

150,300,600 PSIG MODELS

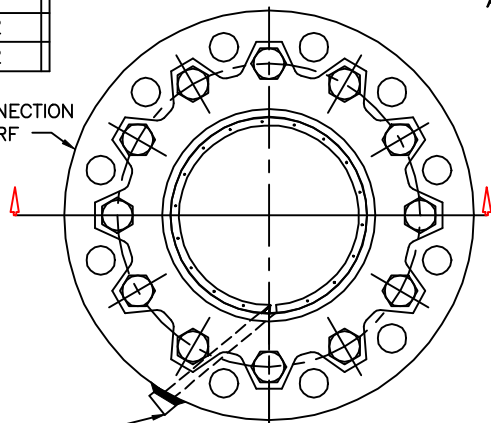
FILE NO.: T400-50.DWG

# OF BOLTS	
SIZE	STUDS
2 IN	4
3 IN	4
4 IN	8
6 IN	8
8 IN	8
10 IN	12
12 IN	12

Full-View Dual Window



Approved



ASME FLANGE CONNECTION PER B16.5 RF

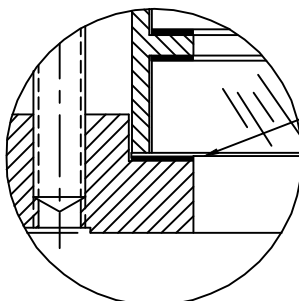
OPTIONAL SPRAY RING SHOWN
 1/4" FNPT CONNECTION

STANDARD DESIGN MATERIALS:

BODY: ASTM/ASME SA-105 (STEEL)
 ASTM/ASME SA-182 (316, 304 SS)

RETAINER: ASTM/ASME SECTION II SA-516-70
 OR SA-216-WCB (STEEL)
 FASTENERS: SAE GRADE 5 (STEEL)

OPTIONAL ALLOYS FURNISHED UPON REQUEST
 TFE LINING STANDARD OPTION



KEL-F, MICA, OR TFE
 SHIELD OPTION
 PROTECTS GLASS
 FROM MEDIUM

PARTS LIST

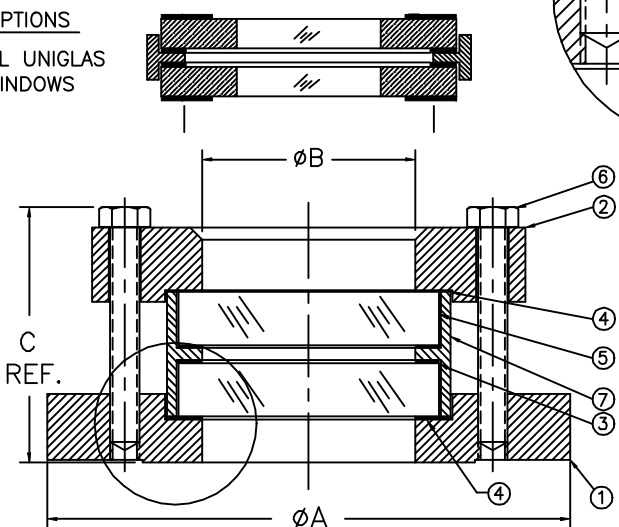
PIECE NO.	NAME OF PART	QUAN.	MATERIAL	COMMENTS
1	BODY	1	SEE BELOW	
2	RETAINER	1	STEEL	
3	CUSHION	2	FIBER	
4	SEAL GASKET	2		
5	WINDOW	2	BOROSILICATE	
6	BOLT		STEEL	
7	CARTRIDGE	1	316 SS	

PRESSURE/TEMP RATINGS

TEMP F	ALL MATERIALS		
	150 PSIG	300 PSIG	600 PSIG
-20 TO 100	150	300	600
150	150	300	600
200	150	300	600
250	150	300	600
300	150	300	600
350	150	300	600
400	150	300	600
450	150	300	600
500	150	300	600

THIS DRAWING AND ALL INFORMATION ON IT IS THE PROPERTY OF JACOBY-TARBOX, DIVISION OF THE CLARK-RELiance CORPORATION. IT IS CONFIDENTIAL AND IS GIVEN TO YOU FOR A LIMITED PURPOSE AND MUST BE RETURNED UPON REQUEST. NEITHER THIS DRAWING NOR ANY PART OF IT NOR ANY INFORMATION CONCERNING IT MAY BE COPIED, EXHIBITED OR FURNISHED TO OTHERS NOR MAY PHOTOGRAPHS BE TAKEN OF ANY ARTICLE FABRICATED OR ASSEMBLED FROM THIS DRAWING WITHOUT CONSENT OF THE CLARK-RELiance CORPORATION.

OPTIONS
 DUAL UNIGLAS
 WINDOWS



DETAIL "A"

SIZE	FLANGE PSIG	A		B		C		APPROX WGT.	
		IN	mm	IN	mm	IN	mm	LBS	KGS
2 IN	150	6.00	152	2.00	50.8	2.63	66.8	7.0	3.2
2 IN	300	6.50	165	2.00	50.8	2.72	69.1	9.0	4.1
2 IN	600	6.50	165	2.00	50.8	3.09	78.4	10.0	4.5
3 IN	150	7.50	190	3.00	76.2	3.06	77.7	13.0	5.9
3 IN	300	8.25	210	3.00	76.2	3.69	93.7	20.0	9.1
3 IN	600	8.25	210	3.00	76.2	4.31	109	23.0	10.4
4 IN	150	9.00	229	4.00	102	2.94	74.7	21.0	9.5
4 IN	300	10.00	254	4.00	102	4.00	102	36.0	16.3
4 IN	600	10.00	254	4.00	102	4.75	121	45.0	20.4
6 IN	150	11.00	279	6.00	152	3.56	90.4	30.0	13.6
6 IN	300	12.50	318	6.00	152	4.78	121	54.0	24.5
6 IN	600	14.00	356	6.00	152	6.59	167	86.0	39.0
8 IN	150	13.50	343	8.00	203	4.16	106	47.0	21.3
8 IN	300	15.00	381	8.00	203	6.09	155	90.0	40.8
8 IN	600	16.50	419	8.00	203	7.90	201	137.0	62.1
10 IN	150	16.00	406	10.00	254	5.75	146	75.0	34.0
12 IN	150	19.00	483	10.00	254	5.81	148	95.0	43.1